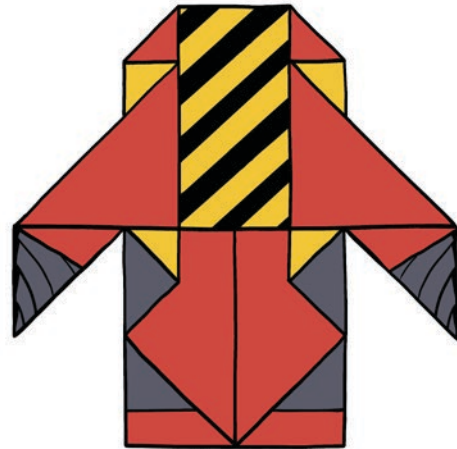
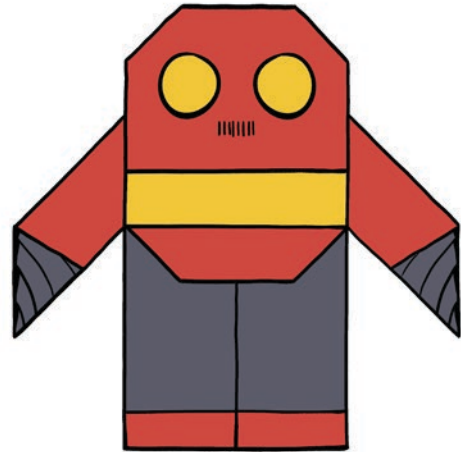


THE ROBOT

In movies, robots usually infiltrate human society by perfectly imitating our appearance and behavior. Recent research suggests these robots are working too hard. Experiments show that you would probably let an unfamiliar robot into a secure building as long as the robot came bearing cookies. For more details on exactly how they'll kill you once they're in the building, check *SOONISH: Ten Emerging Technologies That'll Improve And/Or Ruin Everything*.



SOONISHBOOK.COM/ORIGAMI



Folding pattern designed by Jason Ku © 2017